

# The Full Spectrum of AOI Solutions

## MVP Selecta II - Post Wave and Selective Solder Look Up AOI

The MVP Selecta II AOI is designed to complement both wavesolder and selective solder processes. Utilising look up optics the Selecta II inspects the components soldered by your bottom-side soldering solution. MVP's Selecta II allows for full bottom-side inspection of all wave solder joints including PTH and SMT components in glue. The Selecta II can be used to ensure the quality in your second side process and comes with ease-of-use programming software.

**Full coverage for Wavesolder  
and Selective Solder Processes**

**Full Bottom-Side Inspection**

**Inspect Wave, Reflow, PTH and  
SMT Solder Joints**

**Up to 450x508mm (18x20") Handling**

**Full In-Line Operation**

**Easy-To-Use Performance Based  
Programming**

**Cost Effective Inspection Solution**

**Bottom-Side inspection for PTH Components**

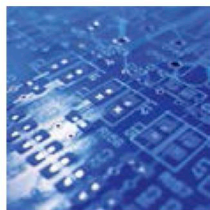
**Full Solder Joint Inspection and Measurement**



Discuss your SMT and Microelectronics inspection application with Machine Vision Products, Inc and discover your solution



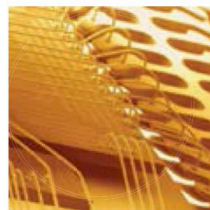
SMT AOI



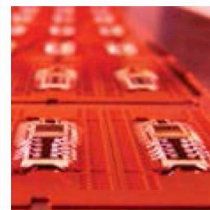
3D Paste AOI



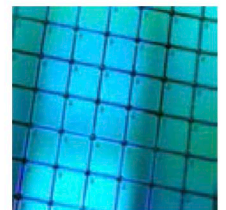
BGA AOI



Wire Bond AOI



Die and Epoxy AOI



Die Surface AOI



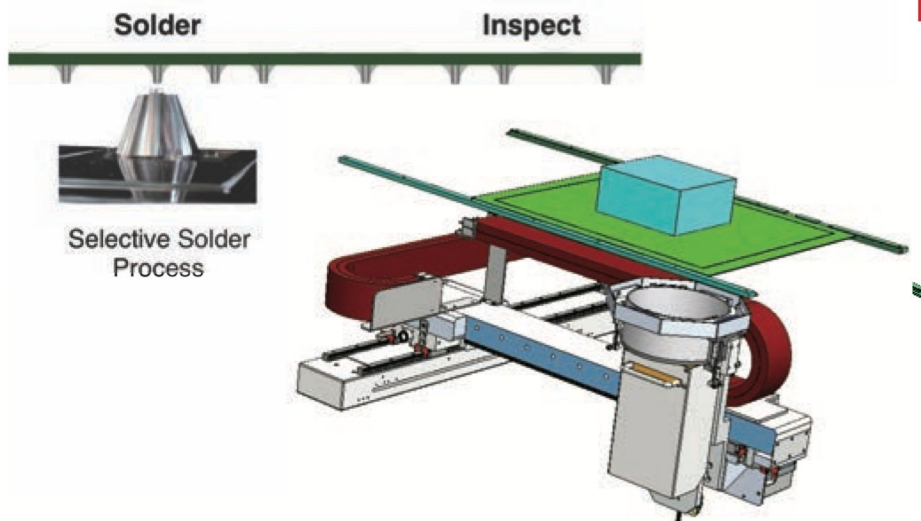
## Comprehensive Defect Coverage For Your Selective Soldering Process

MVP has created a new standard for the bottom-side AOI by bringing the key elements of our high performance systems such as structured lighting, flying camera image acquisition, and rule based, library driven inspection software to the MVP Selecta II AOI system. Incorporating the key technical elements of MVP's existing in-line AOI tools, the Selecta II offers complete defect coverage, low false calls, and high speed usually only available on in-line systems

### Key Features Include:

- Bottom-Side inspection for PTH Components
- Full Solder Joint Inspection and Measurement
- Complete Compatibility and Program Portability with MVP's In-Line Inspection Systems
- Optimized Price Performance Ratio
- MVP's Flying Camera Technology
- Inspect Wave, Reflow, PTH and SMT Solder Joints

## Bottom-Side inspection for Your Wavesolder and Selective Solder Process



## MVP Selecta Technical Specifications

- |                        |                                                                                                                                                                                                                                                                                                                                                                                                                                                                                                                |
|------------------------|----------------------------------------------------------------------------------------------------------------------------------------------------------------------------------------------------------------------------------------------------------------------------------------------------------------------------------------------------------------------------------------------------------------------------------------------------------------------------------------------------------------|
| Inspection Speed       | <ul style="list-style-type: none"><li>• Acquisition Speed of 75 Megapixels per second with a 5 MP Camera</li><li>• Up to 65 sq.cm per second (10 sq.inches per second) inspection dependant on board layout, density and field of view</li></ul>                                                                                                                                                                                                                                                               |
| System Hardware        | <ul style="list-style-type: none"><li>• Proprietary "On-the-fly" camera acquisition</li><li>• Programmable variable LED strobe lighting</li><li>• Proprietary multi-color illumination</li></ul>                                                                                                                                                                                                                                                                                                               |
| System Software        | <ul style="list-style-type: none"><li>• CAD-driven, library-based programming software</li><li>• Proven high performance, adaptable algorithms with highest detectability and lowest PPM false accept and false reject rates</li><li>• Full network integration (TCP/IP, NFS Protocol)</li><li>• Off-line or in-line defect review capability</li><li>• Defect image archive capability</li><li>• Real-time SPC package</li><li>• Report generation utilities for production inspection measurements</li></ul> |
| Physical Specification | <ul style="list-style-type: none"><li>• Inspection envelope 400 mm x 450 mm (16" x 18")</li><li>• Footprint 990mm W x 1100mm D</li><li>• Conveyor length 996mm</li><li>• Power 208-240VAC 50/60Hz, 10A</li><li>• Air 60 PSI, 1CFM</li><li>• Weight 400 kgs (880 lbs)</li></ul>                                                                                                                                                                                                                                 |

Worldwide Headquarters  
Vista, California, USA.  
800.260.4MVP or 760.438.1138  
sales@visionpro.com

European Headquarters  
Fife, Scotland, UK.  
+44 (0) 1383 629960  
saleseurope@visionpro.com

Asia-Pacific Headquarters,  
Shanghai, P.R.C.  
+86.21.6115.2060  
salesasia@visionpro.com

The Full Spectrum  
of AOI Solutions