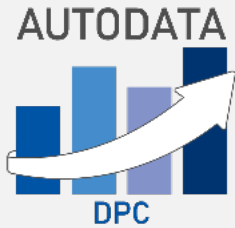


AutoData DPC



AOI Process Management

AutoData DPC automatically combines inspection and repair data to enable extensive real-time quality monitoring, control and analysis of the entire SMT process. AutoData DPC allows users to take control of their inspection processes by using the data collected from AOI in the most effective way, allowing users to quickly identify issues and take corrective

Immediate

Real-Time Dashboards

Interaction with Operators, Technicians and Engineers

Local SQL Database for Fast Correlation of Inspection and Repair Data

Visual

Total Visibility of Process KPI's

Process and Product Yield Management and Trend Visibility

Control

Control and Monitor Inspection Performance

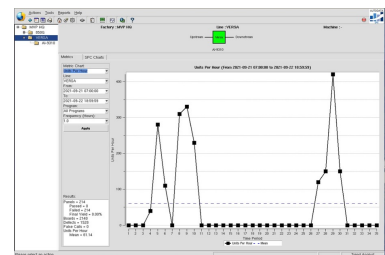
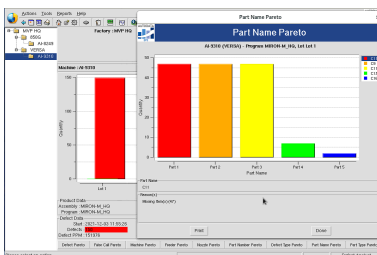
Control and Monitor PPM and Yield

Optimize Inspection and Repair

AutoData DPC allows for rapid tuning and correlation of quality reporting data allowing users to realize the full potential of their AOI equipment right from the first PCB inspected. By providing the tools for defect prevention rather than defect detection AutoData DPC provides the best possible strategy for effective quality control.

Data is stored in a local SQL database with the option to integrate fully into DPC's multi-platform Manufacturing Suite further eliminating opportunities for errors within the manufacturing process.

Discuss your AOI Process Management requirements with Machine Vision Products, Inc and discover your solution



62124-1